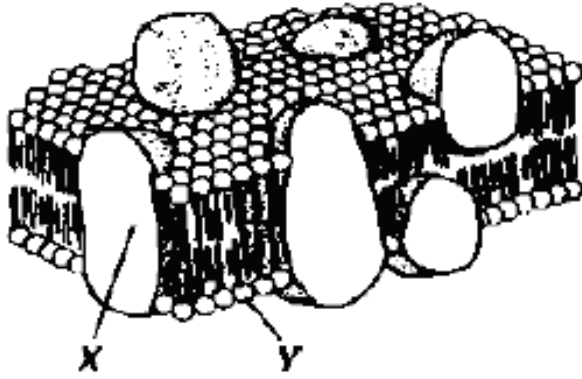


Biology: Cells Practice Test

Organelle Function:

- 1) Which organelles are involved in the production and export of proteins?
 - a) Ribosome
 - b) Endoplasmic reticulum
 - c) Golgi apparatus
 - d) All of the above
- 2) Which statement below best describes the function of the nucleus?
 - a) Stores cells wastes and destructive enzymes
 - b) contains hereditary information and controls most of the cell's processes
 - c) directs cell division in animal cells
 - d) controls water pressure and stores wastes
- 3) What do centrioles do?
 - a) Help cells divide during cytokinesis
 - b) Create cell energy
 - c) Transport cell waste
 - d) Photosynthesis
- 4) Which of the following statements is true about mitochondria?
 - a) They provide cellular respiration in plant cells
 - b) They provide cellular respiration in animal cells
 - c) They provide photosynthesis in plants
 - d) They provide cellular respiration in both animal and plant cells.
- 5) Which is the correct order of enzyme synthesis, from start to finish? (protein building)
 - a) Golgi apparatus, ribosome, endoplasmic reticulum, nucleus
 - b) Nucleus, ribosome, endoplasmic reticulum, golgi apparatus
 - c) Ribosome, golgi apparatus, endoplasmic reticulum, nucleus
 - d) None of the above.
- 6) Which structure, made mainly of lipids and proteins, helps maintain balance, or homeostasis, between the cell and its surrounding environment?
 - a) Cell membrane
 - b) Cytoskeleton
 - c) Endoplasmic Reticulum
 - d) Flagella

7) Which structure is represented by letter X on the diagram below?



- a) Ribosome
 - b) Protein
 - c) Phospholipid
 - d) Cell wall
- 8) Which organelles are responsible for digesting cell waste and foreign bacteria?
- a) golgi apparatus
 - b) cytoskeleton
 - c) nucleus
 - d) lysosome
- 9) This structure gives a cell shape, allows it to move, and moves organelles.
- a) cytosol
 - b) cytoskeleton
 - c) cytoplasm
 - d) plasma membrane
- 10) Which statement below is NOT a part of cell theory?
- a) Cells come from preexisting cells
 - b) Cells are the smallest form of life
 - c) Cells are only considered alive if they reproduce sexually.
 - d) Cells are the structural and functional units of all living things

Prokaryotic and Eukaryotic Cells

11) A eubacteria is an example of which cell type?

- a) plantae
- b) archaeobacteria
- c) prokaryote
- d) eukaryote

12) Which of the following is NOT an example of a eukaryotic cell?

- a) Paramecium
- b) Bacteria
- c) Amoeba
- d) Onion root cell

13) Which of the following statements is false?

- a) Prokaryotic cells are smaller than eukaryotic cells
- b) Eukaryotic organisms can be multicellular
- c) Prokaryotic lack a nucleus
- d) Plant cells are not eukaryotic

14) Which of the following statements is true?

- a) Prokaryotic cells are too small to see with a microscope.
- b) Prokaryotic cells lack membrane bound organelles
- c) Eukaryotic cells never reproduce sexually.
- d) Plant cells never reproduce sexually

Microscopes

15) To calculate total magnification, you must

- a) multiply the power of the ocular lens by the objective lens in use
- b) multiply the two smallest object lenses
- c) divide the ocular lens power by the objective lens
- d) divide the objective lens by the ocular lens power

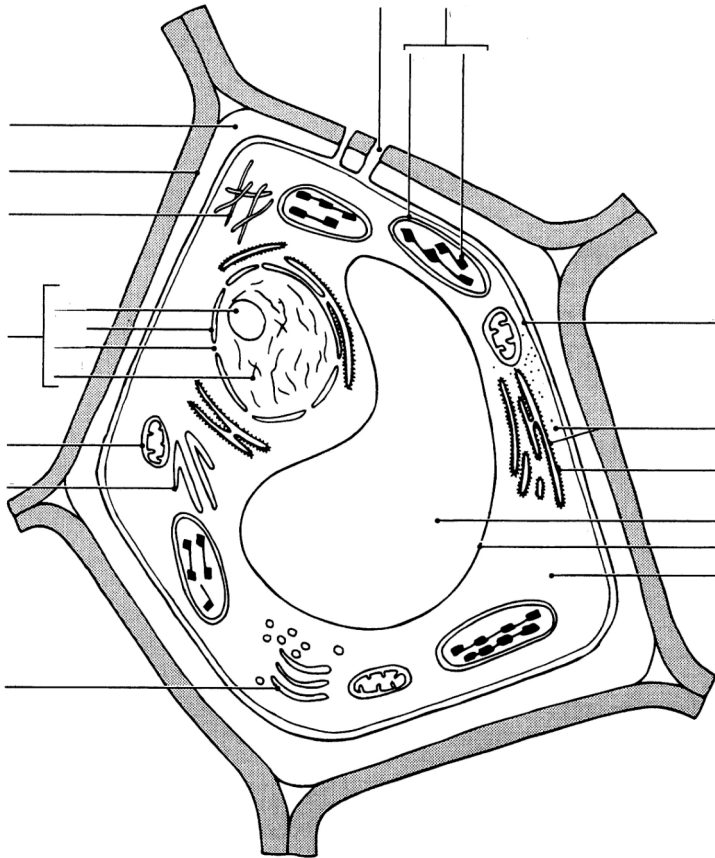
16) What is the field of view diameter?

- a) the distance from the lens to the specimen
- b) the diameter of the circle you see when looking into a microscope
- c) the length of a round cell
- d) The length of the coverslip

17) Which of the following statements is true...

- a) field of view diameter decreases with increase in magnification
- b) field of view diameter increases with increase in magnification
- c) field of view diameter stays the same at all magnifications

Label each structure on the cell diagrams below:



Key for #1-17

- 1. d
- 2. b
- 3. a
- 4. d
- 5. b
- 6. a
- 7. b
- 8. d
- 9. b
- 10. c
- 11. c
- 12. b
- 13. d
- 14. b
- 15. a
- 16. b
- 17. a

