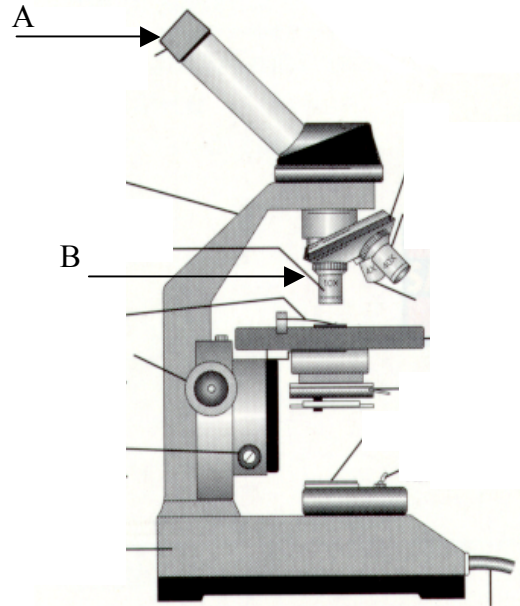


"A" is pointing the ocular lens (eyepiece) and has a magnification of 10X and "B" is pointing to the objective lens with a magnification of 50X. What is the total magnification?

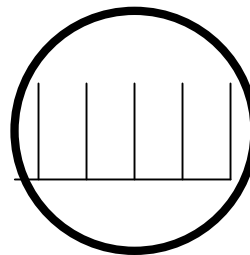


If the total magnification is 400X and the Ocular lens is 10X what is the magnification of the objective lens?

What objective lens do you use to begin looking at a specimen with the microscope.

What is the field of diameter in millimeters in the diagram?

How would the field of diameter change if the diagram is representing the field of view at low power?



What is the field of diameter in microns (micrometers)?