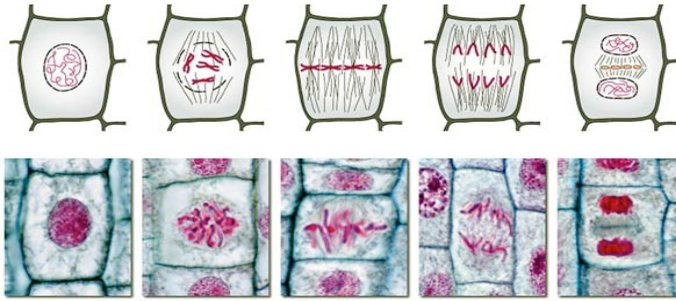
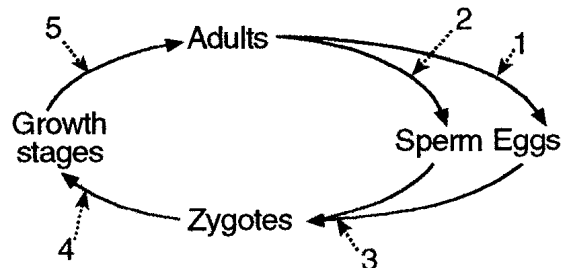


## Biology: Cellular Reproduction Review

- What are the three phases that make up the cell cycle? Describe each phase of the cell cycle.
  - 
  - 
  -
- What may happen if the cell cycle is not controlled and cell growth continues at an abnormal rate?
- Identify each of the phases below.

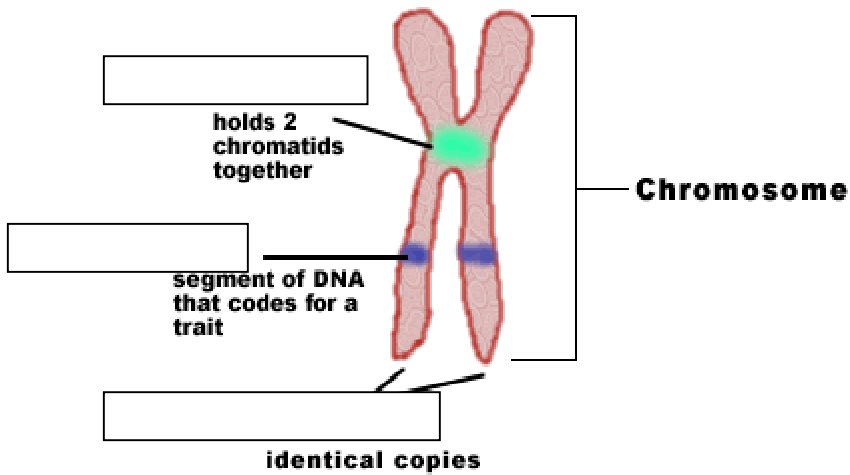


- How does cytokinesis differ in animal cells and plant cells?
- Mitosis results in \_\_\_ genetically \_\_\_\_\_ diploid cells. Mitotic cell division occurs in \_\_\_\_\_ cells of Eukaryotes. Mitosis is an example of \_\_\_\_\_ reproduction.
- Meiosis results in \_\_\_ genetically different \_\_\_\_\_ cells. Meiotic cell division occurs in the \_\_\_\_\_ of Eukaryotes. Meiosis is an example of \_\_\_\_\_ reproduction.
- Describe and make a diagram of homologous chromosomes.
- In the diagram below identify the numbers that indicate haploid (monoploid) cells and those that indicate diploid cells.

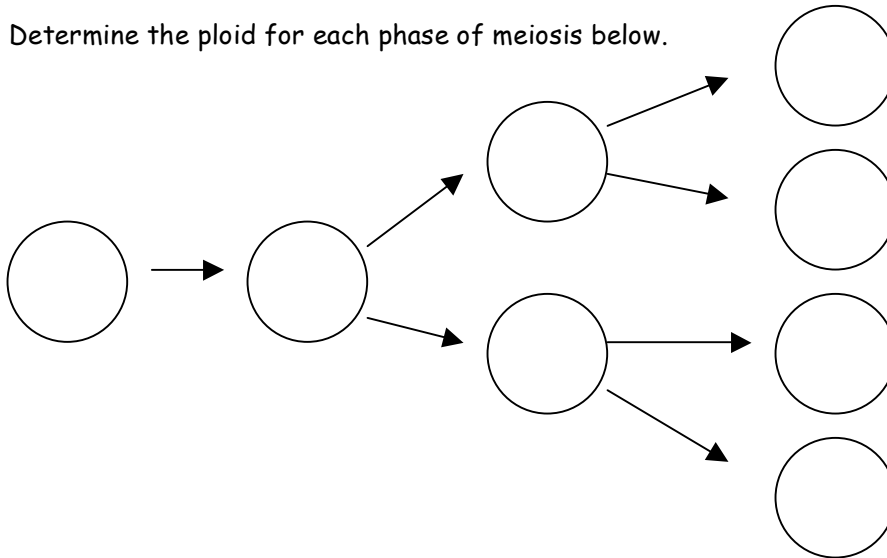


- If the cells in the tongue of a Lemur (a type of primate) have 60 chromosomes how many chromosomes would the cells located in the gonads contain?
- A karyotype is a map of homologous chromosomes. If there are three 21<sup>st</sup> chromosomes (trisomy 21) what genetic disorder would the individual have?
- The sex chromosomes XX code for a \_\_\_\_\_ and XY codes for a \_\_\_\_\_.

12. Identify the parts of the chromosome below.



13. Determine the ploid for each phase of meiosis below.



14. Why is it that most siblings don't look exactly like each other and that offspring rarely look exactly like their parents (*hint: think about what occurs during prophase I of meiosis I*)?

15. A sperm cell of a male phoose contains 30 chromosomes, how many chromosomes are normally present in the cells that make up the eye of a phoose?